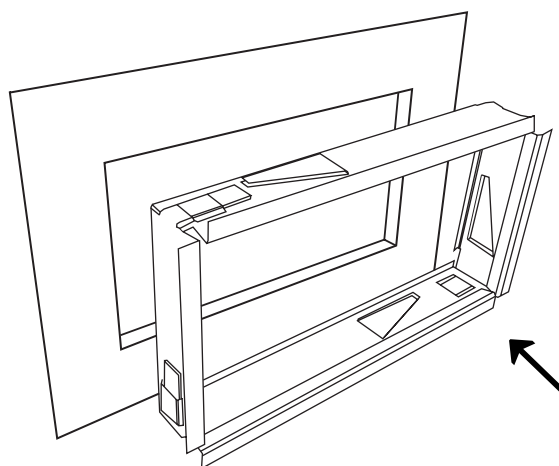
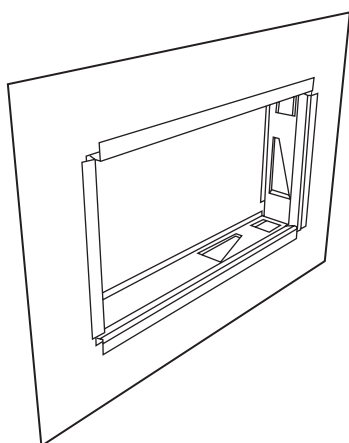


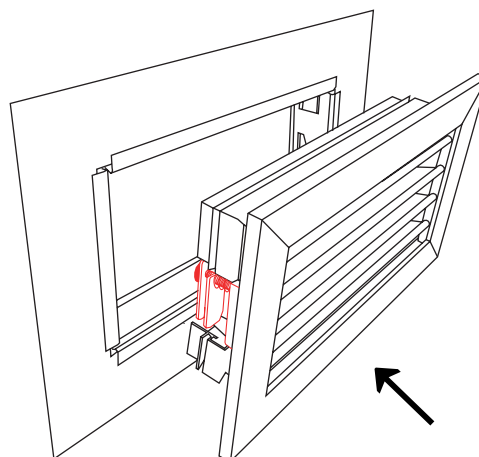
1 – Make a hole of the corresponding dimensions (check hole size in the catalogue) in the wall.



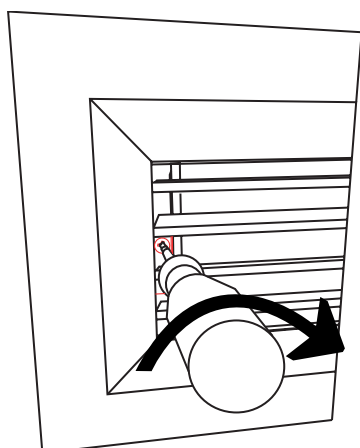
2 – Place the mounting frame into the hole, pressing it firmly against the wall.



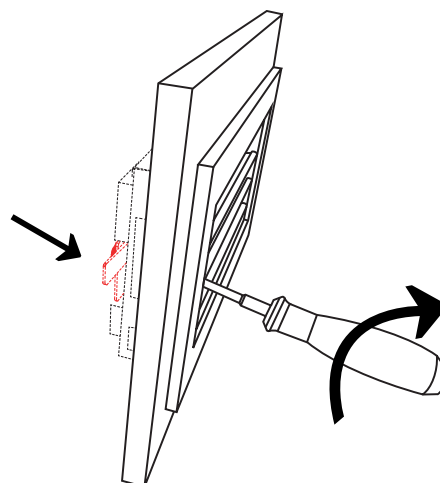
3 – Press the frame against the wall until it is positioned as shown in the image, and secure it by bending the tabs.



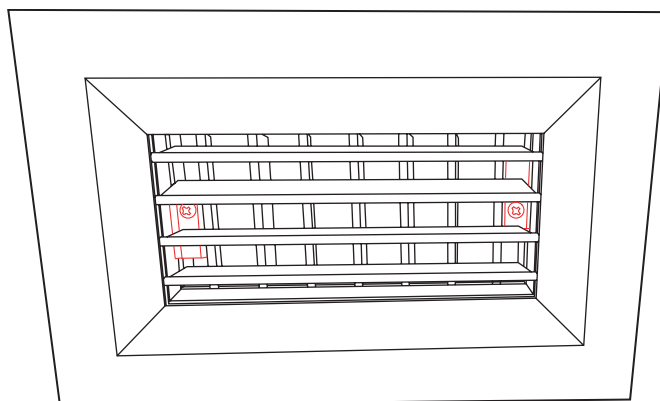
4 – Insert the grille with the latch tongues hidden.



5 – Rotate 90° to the right to turn the latch tongue.

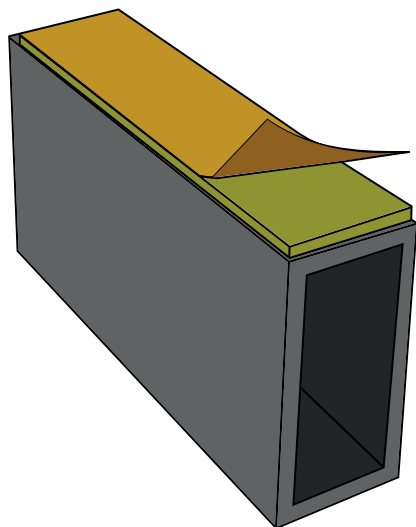


6 – Continue turning the screw to the right until the tongue stops against the mounting frame.

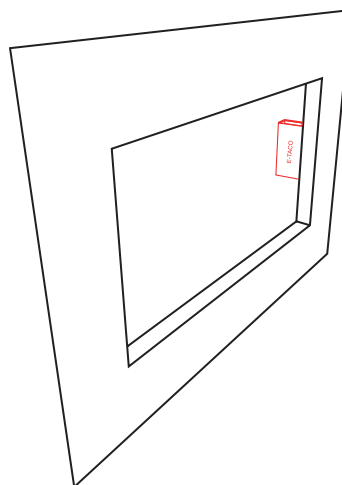


7 – Repeat steps 5 and 6 for each latch until the grille is securely fixed.

For latch fixation, E-TACOs can also be used. In this case, the latch tongue will stop against the E-TACO. The installation steps are the same except for steps 2 and 3:



2' – Peel off the adhesive backing of the E-TACO.



3' – Attach the E-TACO behind the wall in the approximate locations where the latches will be positioned.